

OWSTON/OUSTON FAMILY LINEAGE CHARTS

UNDERSTANDING THE CHARTS

Much like biological science delineates living things as to kingdom, phylum, class, order, family, genus, species, and breed; we have adopted a simple but consistent naming pattern. The terms utilized in our taxonomy include the following:

Clan – generic terminology for all Owston/Ouston descendants regardless of lineage.

Family – one of the three major families identified by location of origin.

Branch – a subdivision based upon early key family patriarchs.

Sub-branch – a further delineation from intermediate ancestors.

Line – a lineage that continues to the present.

Segment – a further subdivision of a line.

The following charts represent all three of the Owston/Ouston families that exist to the present and are named after the geographic locations associated with that family. They are termed the Ganton, Sherburn, and Thornholme families. These families are then subdivided by key patriarchs into branches or significantly tested lines. The Ganton family has only one surviving branch, the Thornholme family has two, while the Sherburn family has four. Since the Sherburn family is rather large, each branch has its own chart. In addition, there is a chart for the Cobourg line as it is the best represented family in the study thus far.

Among each of the families are lines. These are Owston/Ouston descendants that share a common ancestor born in the late 18th to mid 19th century and have at least one male Owston/Ouston living today. When necessary, the lines were further subdivided into segments. Segments are often too recent to be considered lines; however, many times they have similar characteristics found in the 23 identified lines. Often geography, illegitimacy, and/or adoption determine if a segment exists.

Extinct Lines and Segments: While some living descendants may balk at the “extinct” terminology, it is merely the loss of a male bearing the surname.

Large Box Colors: These indicate people on the chart and the following color schema are delineated below:

ROBERT OWSTON
????-????

Gray boxes with red text indicate conjectured ancestors.

REV. FRANCIS
OWSTON
1819-1908

Darker boxes with white text indicate lines or segments where the surname usage by males and/or Owston/Ouston Y-DNA has become extinct.

RICHARD OWSTON
1853-????

Lighter boxes with black text are active lines and segments.

Flags: The various flags indicate locations where Owston/Ouston surname is represented and where non-surnamed participants currently living. The countries represented include the following: Australia, Canada, England, Finland, France, New Zealand, Scotland, The United States of America, and Wales.

Small Box Colors: These represent males who have participated in Y-DNA testing. The designations are the various haplogroups such as, I1, I2, G2a, and R1b and are represented in white text. In addition, two subjects with I1 haplogroups do not match the Owston/Ouston modal I1.



Green boxes indicate matching Y-DNA with an STR test.



Green boxes with a plus sign indicate matching Y-DNA STRs and matching autosomal DNA.



Green boxes with an asterisk indicate matching Y-DNA STRs and no current matching autosomal DNA (relationships may be too distant for an autosomal match). Future matches may occur.



Blue boxes with a plus sign indicate matching Y-DNA SNPs and matching autosomal DNA.



Red boxes indicate non-matching Y-DNA with an STR test.



Red boxes with a minus sign indicate non-matching Y-DNA and non-matching autosomal DNA.

Small Circle Colors: These represent individuals (males and females) who have only participated in autosomal testing.



Blue circles with a plus sign have matching autosomal DNA.



Red circles with a minus sign with non-matching autosomal DNA.

Arrangement: The charts are arranged in the following order:

Ganton Family Chart

Sherburn Family Part 1 – Scarborough Branch Chart

Sherburn Family Part 2 – Thorpe Bassett Branch Chart

Sherburn Family Part 3 – Holderness Branch Chart

Sherburn Family Part 4 – Yeoman Farmer Branch Chart

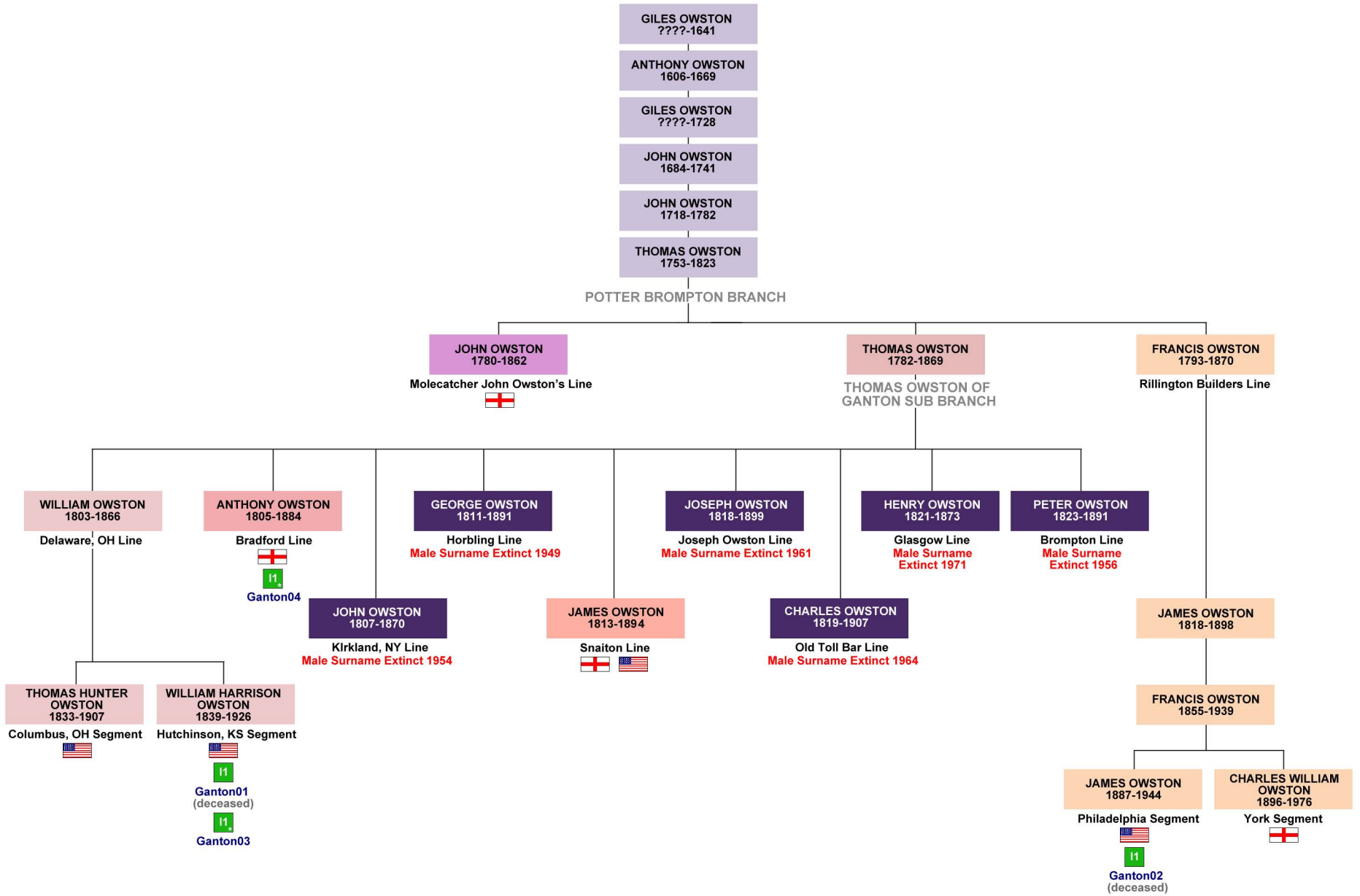
Sherburn Family Part 5 – Cobourg Line Chart

Thornholme Family Part 1 – Michael Owston Branch Chart

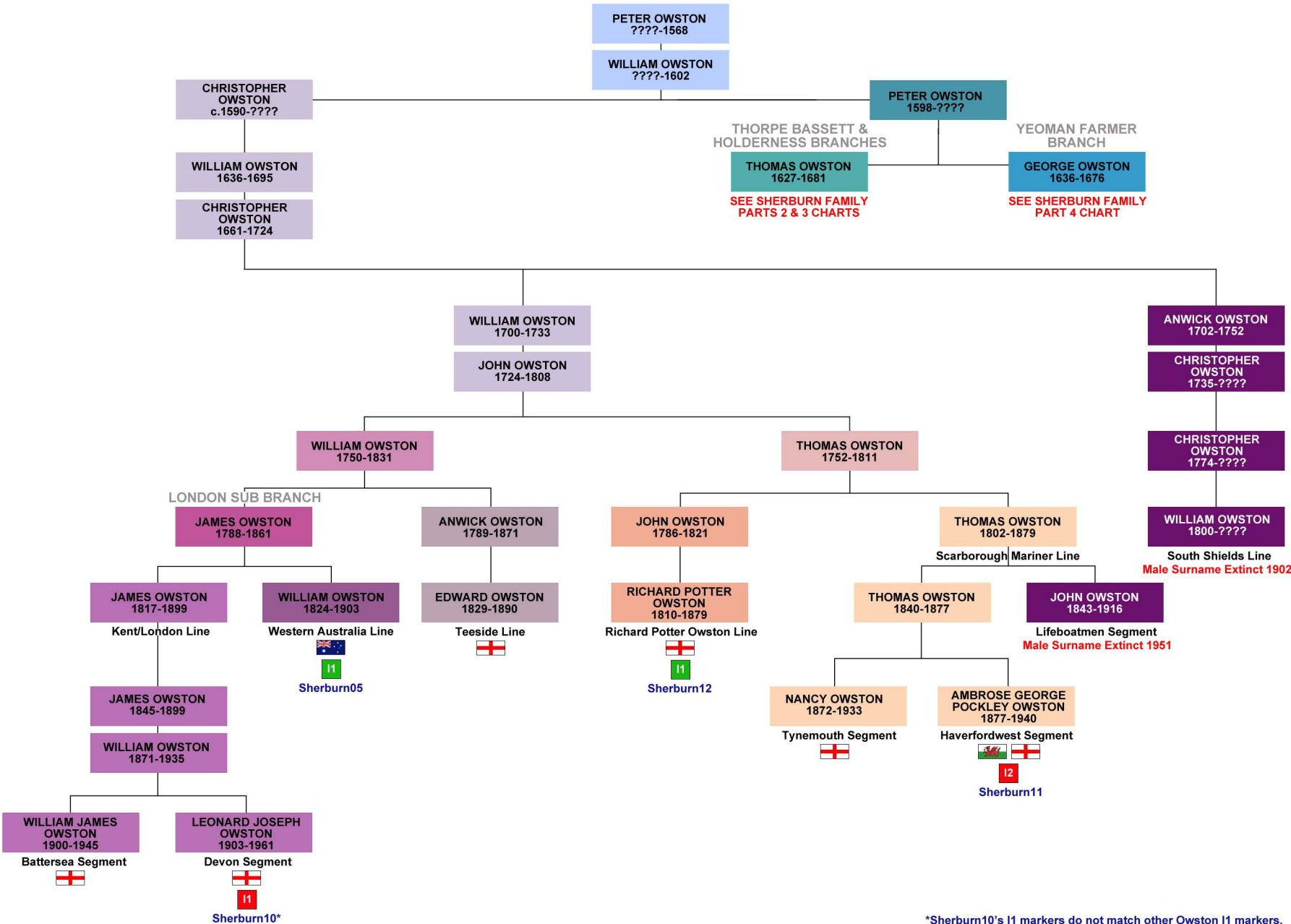
Thornholme Family Part 2 – William Owston Branch Chart

Owston/Ouston Families Hypothetical Connection

GANTON OWSTON FAMILY

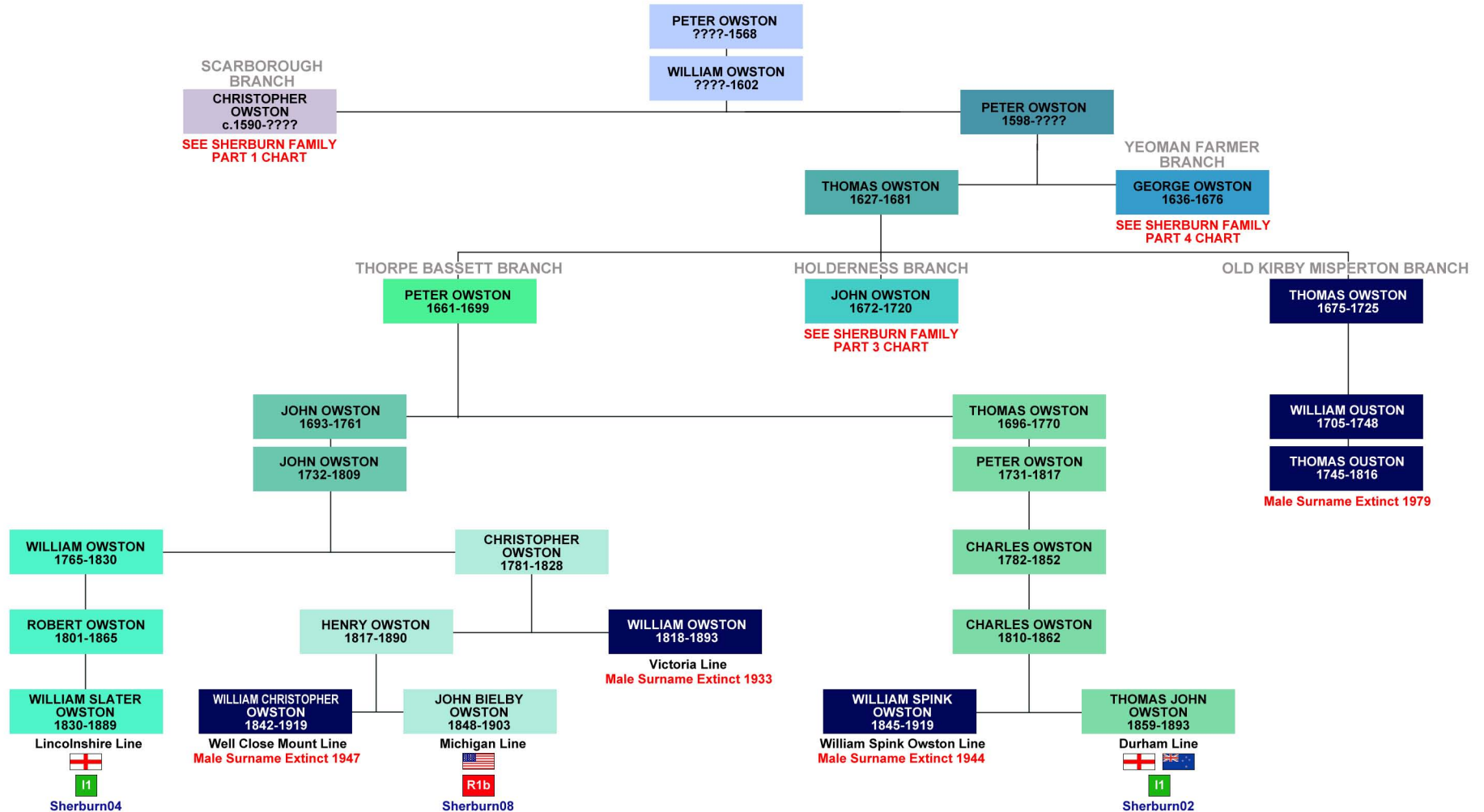


SHERBURN FAMILY PART ONE: SCARBOROUGH BRANCH

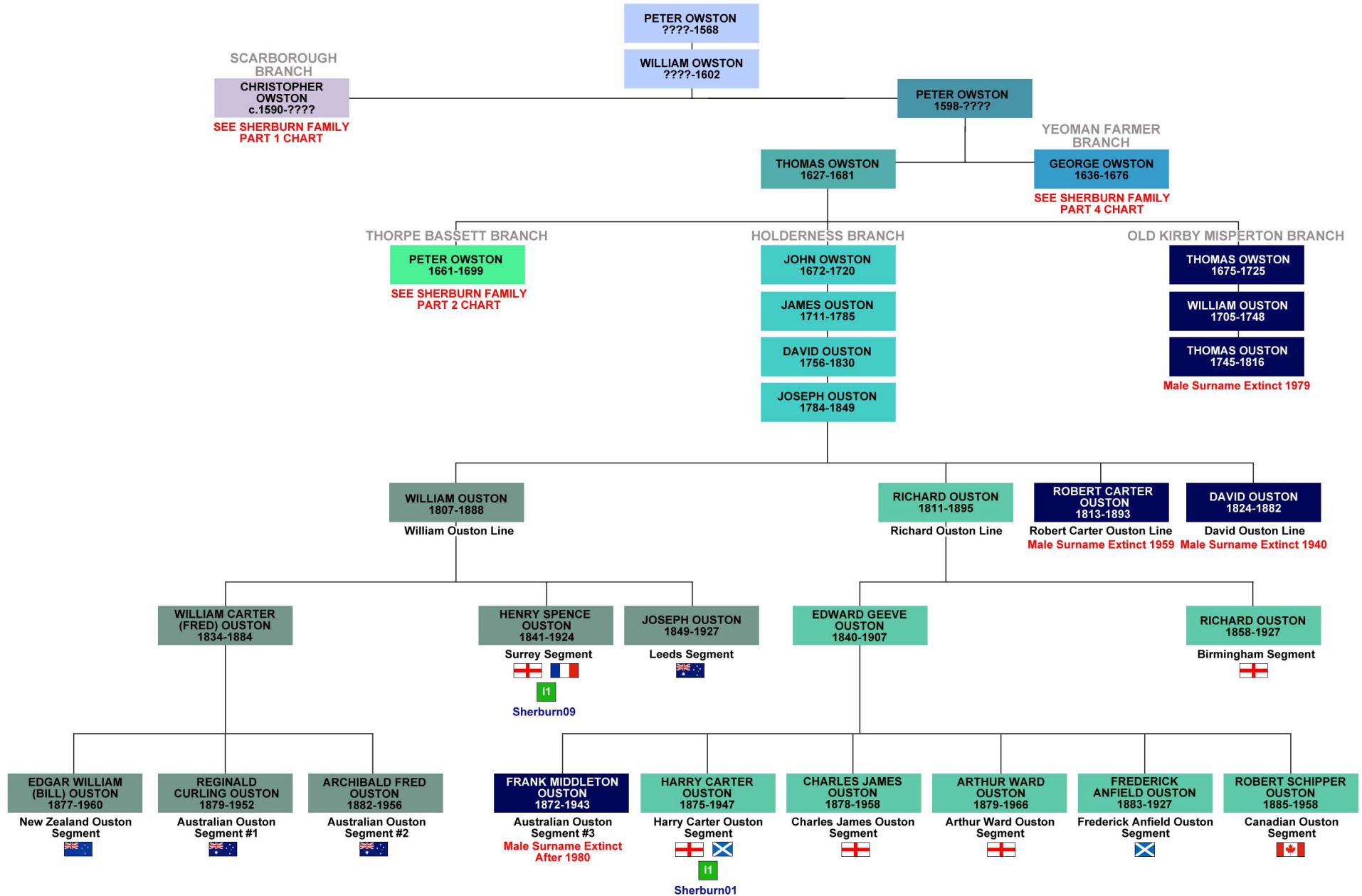


*Sherburn10's I1 markers do not match other Owston I1 markers.

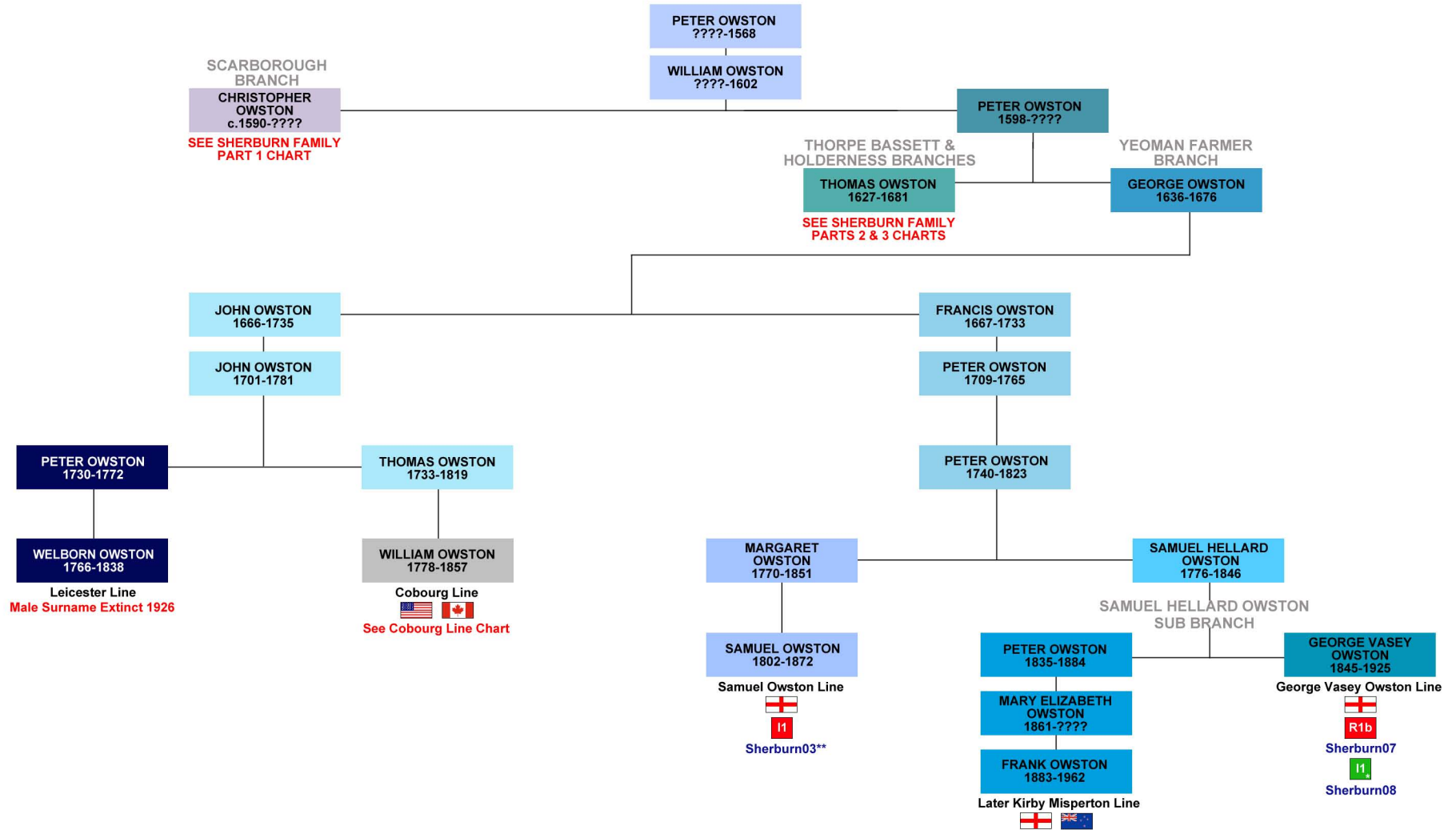
SHERBURN FAMILY PART TWO: THORPE BASSETT BRANCH



SHERBURN FAMILY PART THREE: HOLDERNESS BRANCH

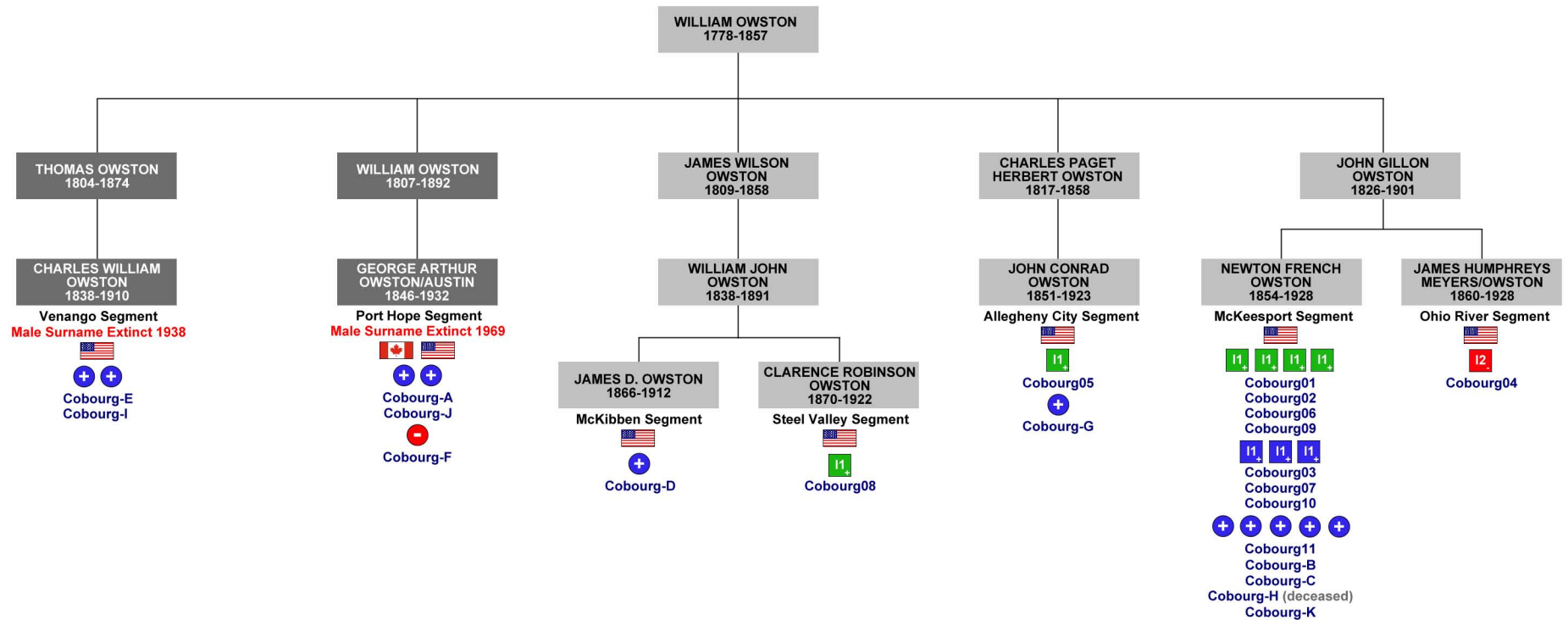


SHERBURN FAMILY PART FOUR: YEOMAN FARMER BRANCH

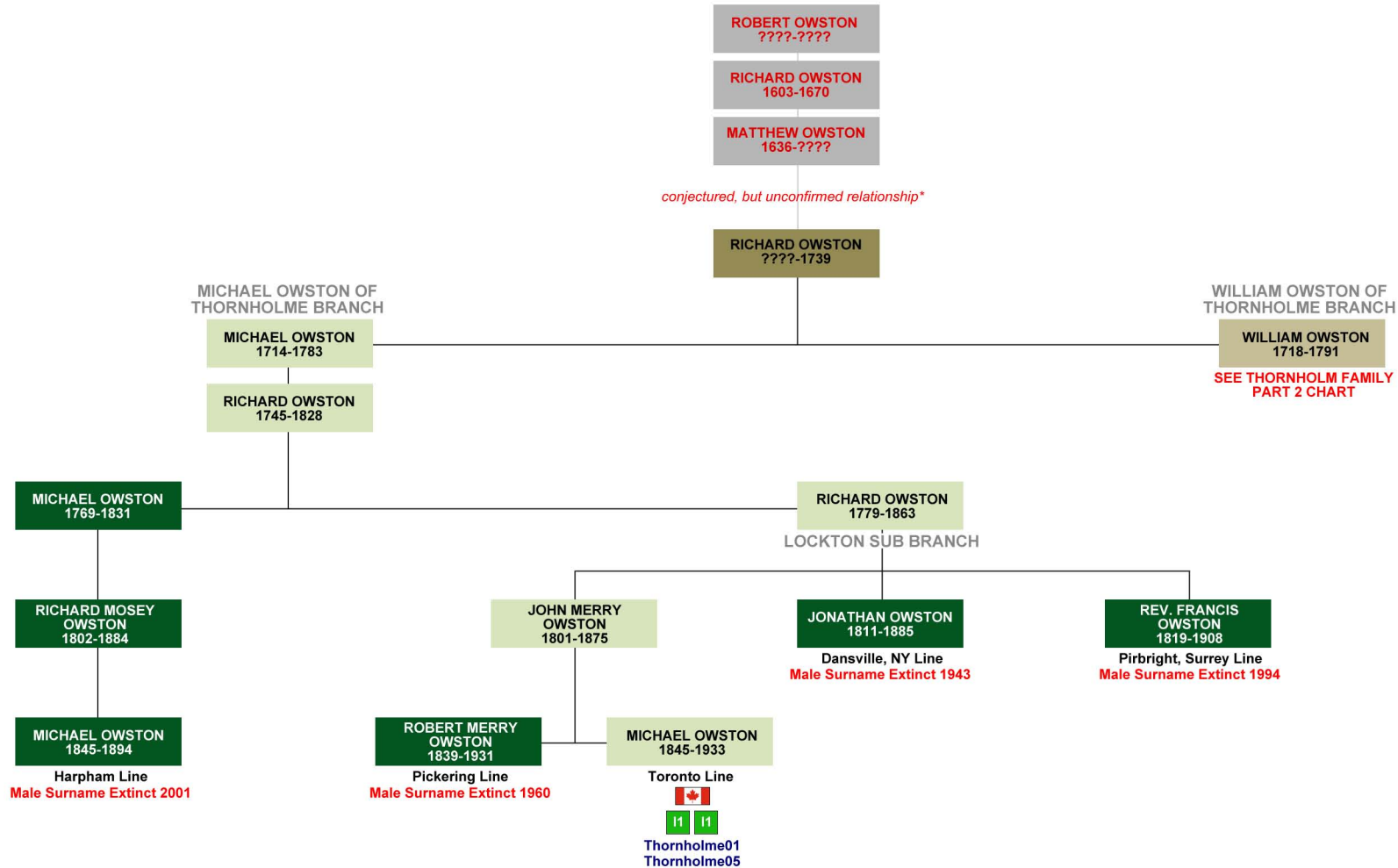


**Sherburn03's I1 markers do not match other Owston I1 markers.

SHERBURN FAMILY PART FIVE: COBOURG LINE

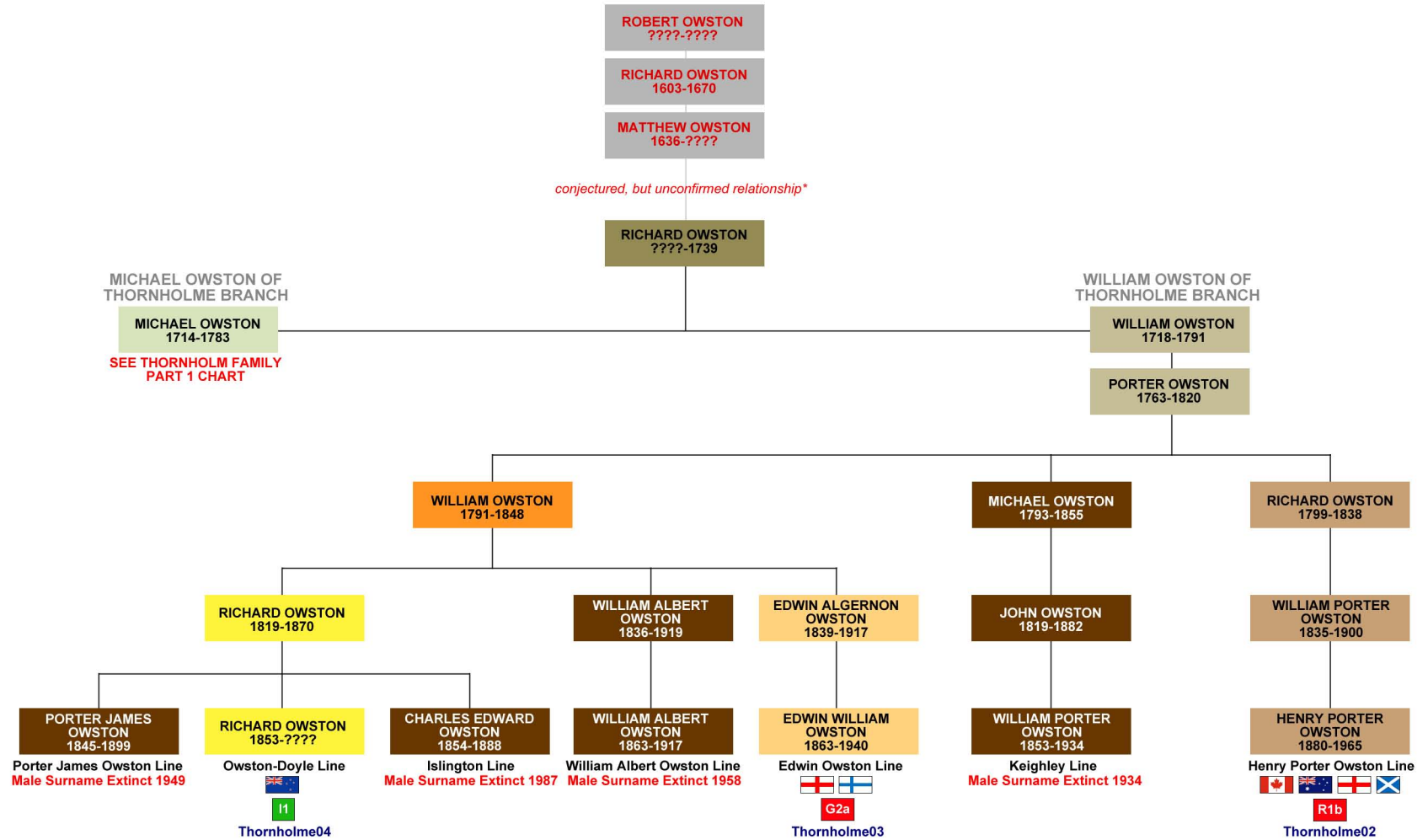


THORNHOLME OWSTON FAMILY PART ONE: MICHAEL OWSTON BRANCH



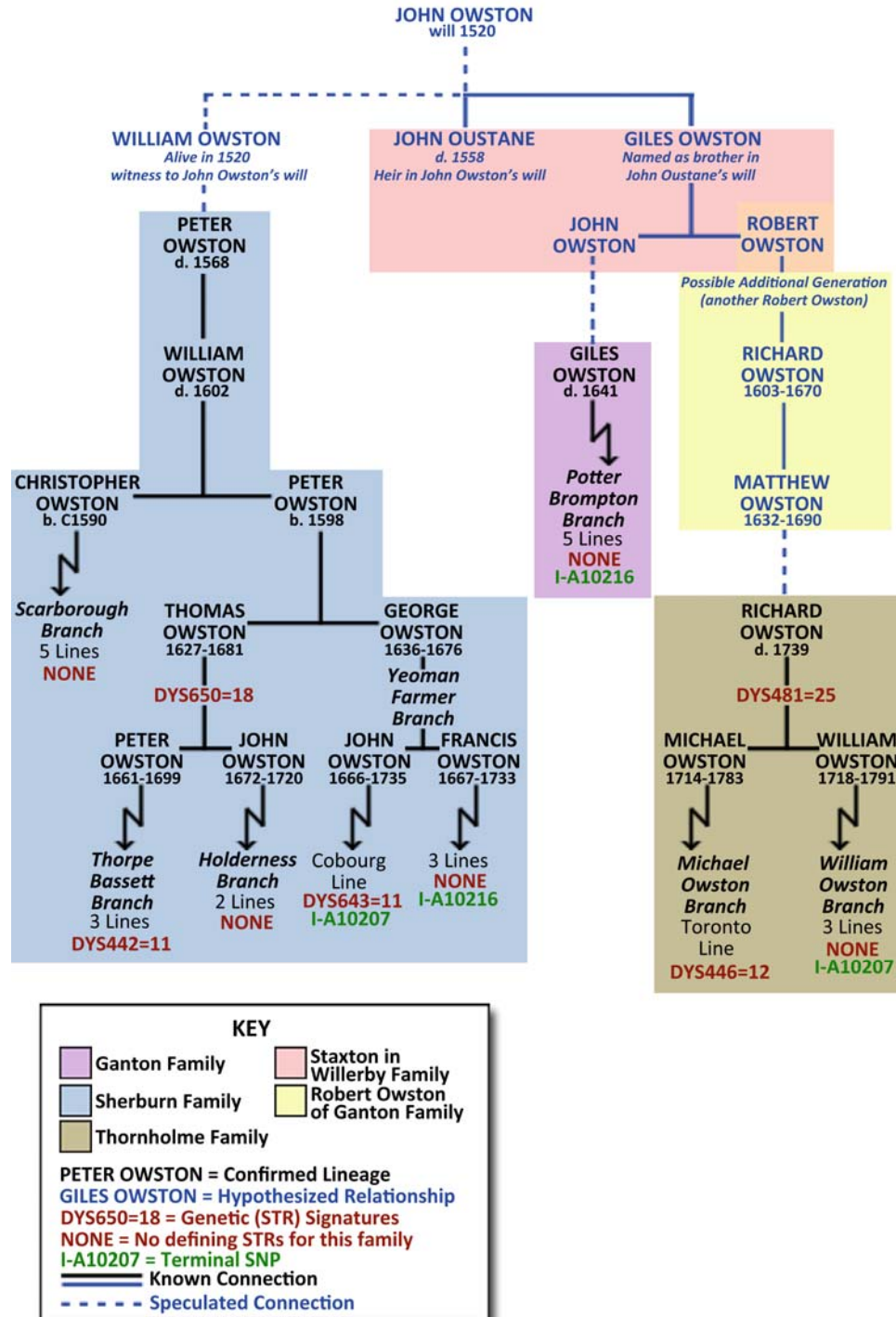
*The ancestry of Richard Owston (????-1739) has not been proven; however, the usage of names Richard, Michael, Matthew, and Robert are found in both the Richard Owston family of Thornholme and the Robert Owston family of Ganton.

THORNHOLME OWSTON FAMILY PART TWO: WILLIAM OWSTON BRANCH



*The ancestry of Richard Owston (????-1739) has not been proven; however, the usage of names Richard, Michael, Matthew, and Robert are found in both the Richard Owston family of Thornholme and the Robert Owston family of Ganton.

OWSTON/OUSTON FAMILIES HYPOTHETICAL CONNECTION



The above diagram represents a plausible connection between the Ganton, Sherburn, and Thornholme Owston/Ouston families. By using several 16th century wills and other documentation of two extinct families located in Staxton in Willerby and the neighboring parish

of Ganton, it is possible with the use of naming conventions to begin to connect the three extant families. This is only a hypothetical tree and cannot, at the present, be proved.