

OWSTON/OUSTON FAMILY LINEAGE CHARTS

UNDERSTANDING THE CHARTS

The following charts represent the two Owston/Ouston families that exist to the present and are named after the geographic locations associated with that family. Named for the locations of their patriarchs at the time of their deaths, they are identified as the Sherburn and Thornholme families. Originally, the Ganton branch was thought to have descended from Giles Owston (d. 1641) and was a separate group; however, DNA results from late 2017 have confirmed that the current Ganton group is actually a branch of the Sherburn family and not descended from the older, now extinct, Ganton family.

Both the Sherburn and the Thornholme families are subdivided by key patriarchs into extant branches. The Thornholme family has two branches, while the Sherburn family has three überbranches, which are further subdivided into branches and lines. The lines include Owston/Ouston descendants that share a common ancestor born in the late 18th to mid-19th century and have had at least one male Owston/Ouston alive as of 2010. When necessary, the lines were further subdivided into segments. Segments are often too recent to be considered lines; however, many times they have similar characteristics as found in the 23 identified lines for this study. Often geography, illegitimacy, and/or adoption determine if a segment exists. There are 37 segments and non-segmented lines where male usage of the surname was present in 2010.

Male Surname Extinct Lines and Segments: These are branches, lines, and segments where there are no remaining males who bear the surname. These groups may provide autosomal participants to the project. Of the extinct groups, there are two branches, 18 lines, and three segments. Of those, there are one branch and three lines that became completely extinct during the 20th century; these families have no living descendants.

Identification of the Participants: Participants are typically named by their Owston family of origin (i.e., Sherburn and Thornholme). However, there are exceptions. The Cobourg line (of the John Owston branch of the Sherburn family) and the Ganton branch of the Sherburn family have their own designations. The Cobourg line was given its own designation due to the number of participants from this group (currently 47 individuals). The Ganton branch was incorrectly thought to be a separate family.


Owston/Ouston surnamed males are identified by number (e.g. Ganton03, Cobourg05, Sherburn02, Thornholme01). Owston/Ouston surnamed females and non-surnamed related males and females are identified with an alphabetic character that is preceded by a hyphen. Currently only the Sherburn family and its Cobourg line have alphabetic designations (e.g., Sherburn-A, Cobourg-H, Cobourg-O); however, plans are in place to include female autosomal participants from other lines.

Finally, known relatives that have not committed to the study, but a partial comparison can be accomplished via the testing company, are given an X plus a number to indicate this “extra”

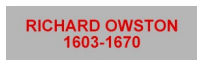
status. These individuals are designated as CobourgX1, CobourgX2, etc. Since multiple testing companies have been used, these individuals cannot be compared to all others in the study.

In addition, participant identifications may be abbreviated with the first letter of the family designation. This is done in the following manner: Ganton04 as G04, Sherburn12 as S12, Thornholme05 as T05, Cobourg01 as C01, Sherburn-A as S-A, and CobourgX1 as CX1. Alphanumeric characters are assigned when results are returned from the testing company.

Large Box Colors: These indicate people on the charts and the following color schema are delineated below:



Lighter boxes with black text are active lines and segments.



Gray boxes with red text indicate conjectured ancestors.



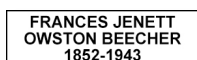
Darker boxes with white text indicate branches, lines, or segments where the surname usage by males and/or Owston/Ouston Y-DNA has become extinct during the 20th or 21st centuries.



Darker boxes with the text of a lighter color of the same hue indicates that the final male of the lineage had tested, but has subsequently died.





Black boxes with white text indicate lines or segments where the complete lineage has become extinct during the 20th or 21st centuries.




White boxes with a black border and text indicate existing significant descent lines through females. Autosomal testing is warranted.

Small Box Colors: These represent males who have participated in Y-DNA testing. The designations are the various haplogroups such as, I1, I2, G2a, R1a, and R1b and are represented in white text. In addition, two subjects with I1 haplogroups do not match the Owston/Ouston modal I1 haplotype due to the surname being transmitted via female ancestors.

 Green boxes and I1 indicate matching Y-DNA with an STR test.

 Green boxes with I1 and a plus sign indicate matching Y-DNA STRs and autosomal DNA.

 Green boxes with I1 and an asterisk indicate matching Y-DNA STRs and no current matching autosomal DNA (current tested relationships may be too distant for an autosomal match).



Green boxes with I1 and a question mark indicate matching Y-DNA STRs and one questionable autosomal match. Likely, the match is due to a heretofore unknown non-Owston/Ouston lineage or due to common population heritage.



Blue boxes with I1 and a plus sign indicate matching Y-DNA assignment via 23andMe or Living DNA and have matching autosomal DNA.



Red boxes indicate non-matching Y-DNA with an STR test.



Red boxes with a plus sign indicate non-matching Y-DNA and matching autosomal DNA.



Red boxes with a minus sign indicate non-matching Y-DNA and non-matching autosomal DNA.



Red boxes with a plus/minus sign indicate non-matching Y-DNA and matching autosomal DNA within a small distinct family group, but not with others in the line.



Red boxes with a question mark indicate non-matching Y-DNA and one questionable autosomal match. Likely, the match is due to a heretofore unknown non-Owston/Ouston lineage or due to common population heritage.



Black boxes with no markings indicate that a Y-DNA test is pending.

Small Circle Colors: These represent individuals (males and females) who have only participated in autosomal testing.



Blue circles with a plus sign indicate matching autosomal DNA.



Red circles with a minus sign indicate non-matching autosomal DNA.



Purple circles with a plus/minus sign indicate matching autosomal DNA only within a small distinct family group, but not with others in the line.



Black circles with no markings indicate pending autosomal DNA results.

Flags: The various flags indicate locations where the Owston/Ouston surname is represented and where non-surnamed participants currently live. The countries represented include the following: Australia, Canada, England, Finland, New Zealand, Scotland, The United States of America, and Wales.

Arrangement of Charts: The charts are arranged in the following order:

Sherburn Family Part 1 – Root Family Chart

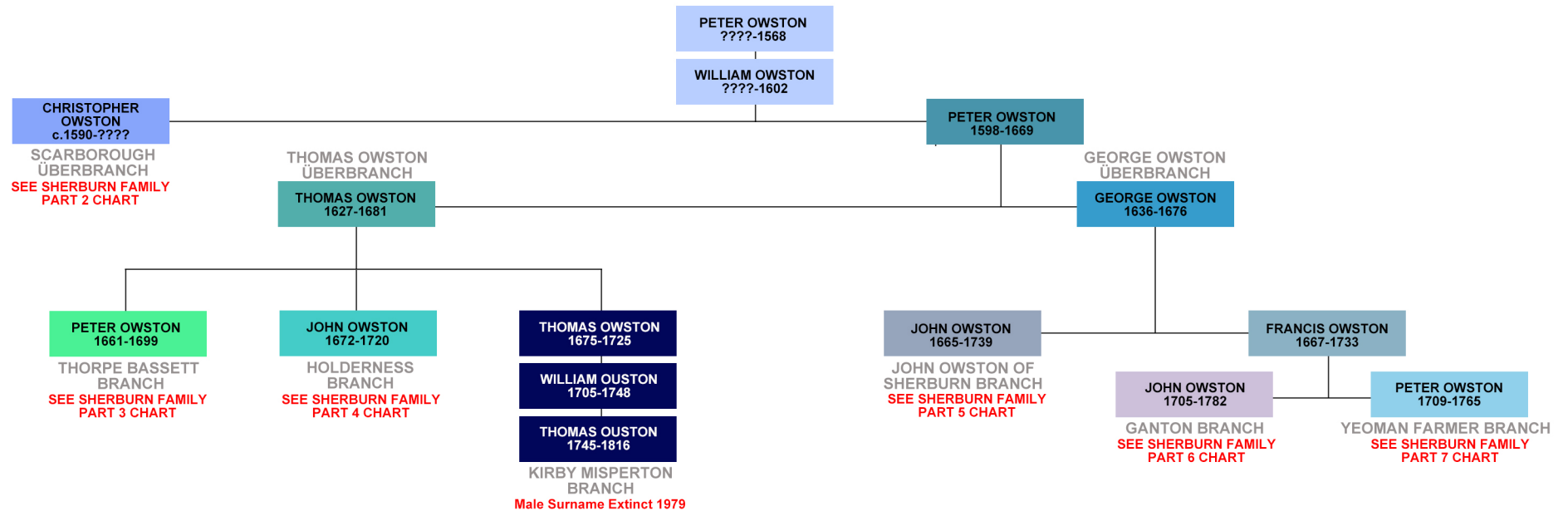
Sherburn Family Part 2 – Scarborough Branch Chart

Sherburn Family Part 3 – Thorpe Bassett Branch Chart

Sherburn Family Part 4 – Holderness Branch Chart

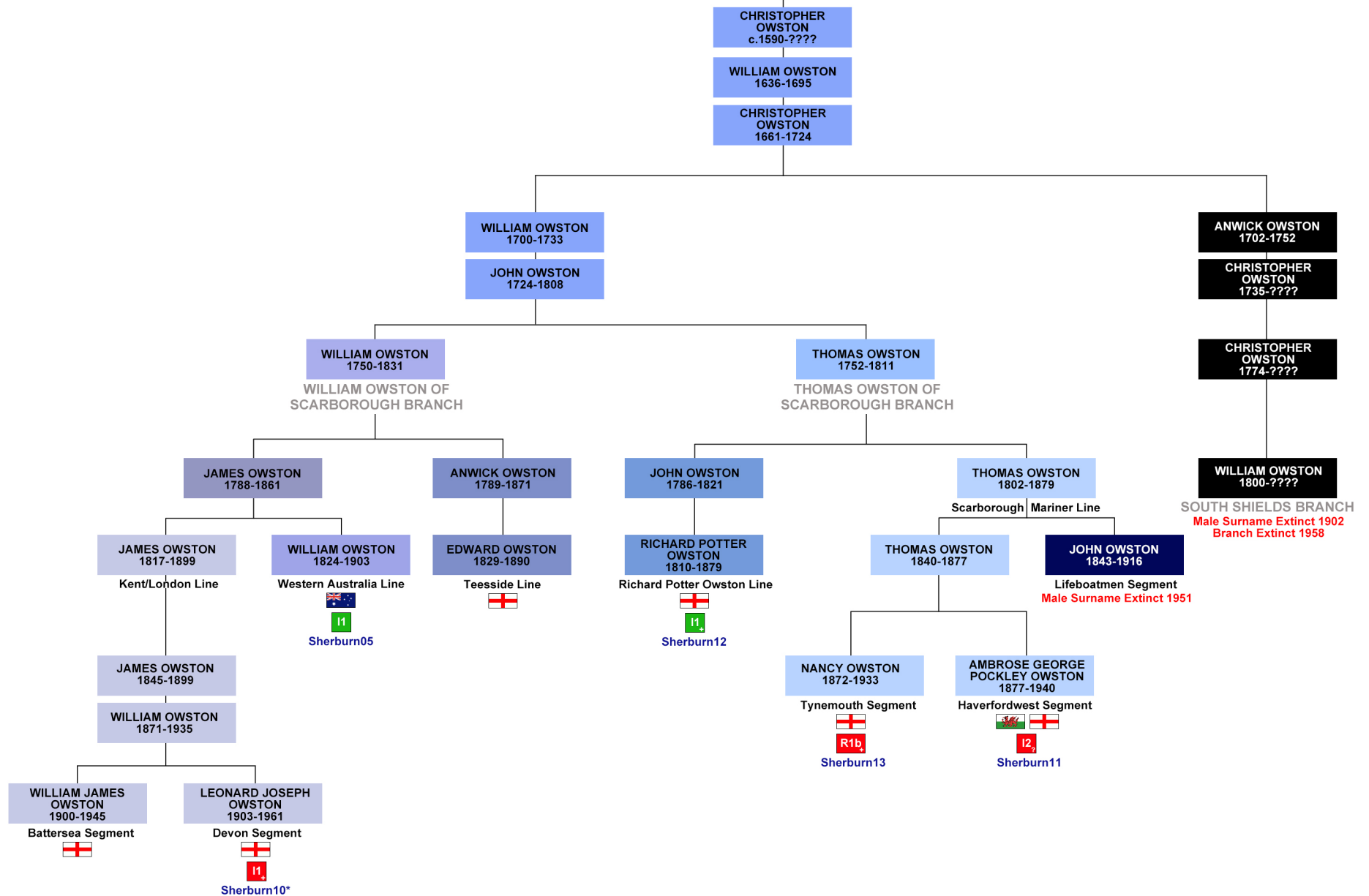
Sherburn Family Part 5 – John Owston Branch Chart
Sherburn Family Part 6 – Ganton Branch Chart
Sherburn Family Part 7 – Yeoman Farmer Branch Chart
Thornholme Family Part 1 – Michael Owston Branch Chart
Thornholme Family Part 2 – William Owston Branch Chart
Owston/Ouston Families Connections

SHERBURN FAMILY PART ONE: ROOT FAMILY



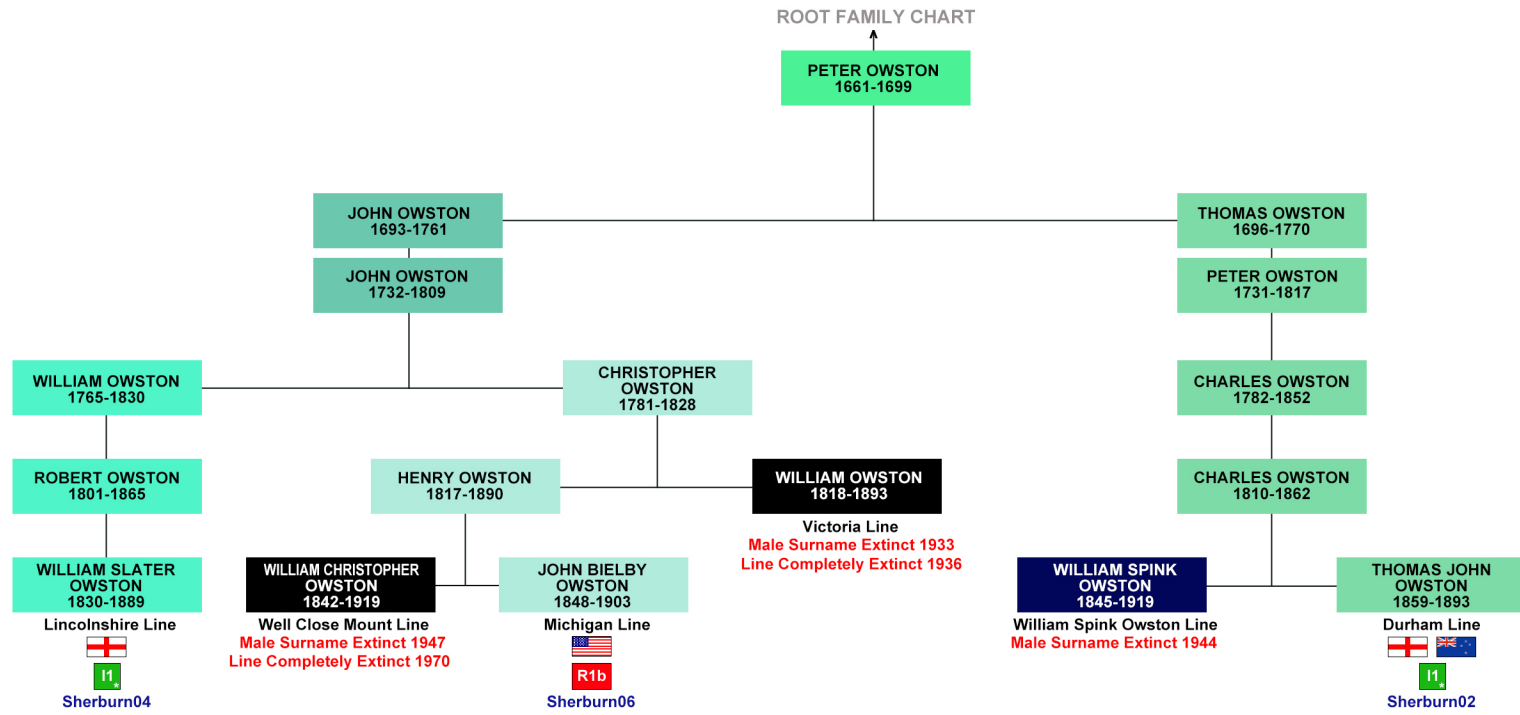
SHERBURN FAMILY PART TWO: SCARBOROUGH ÜBERBRANCH

ROOT FAMILY CHART



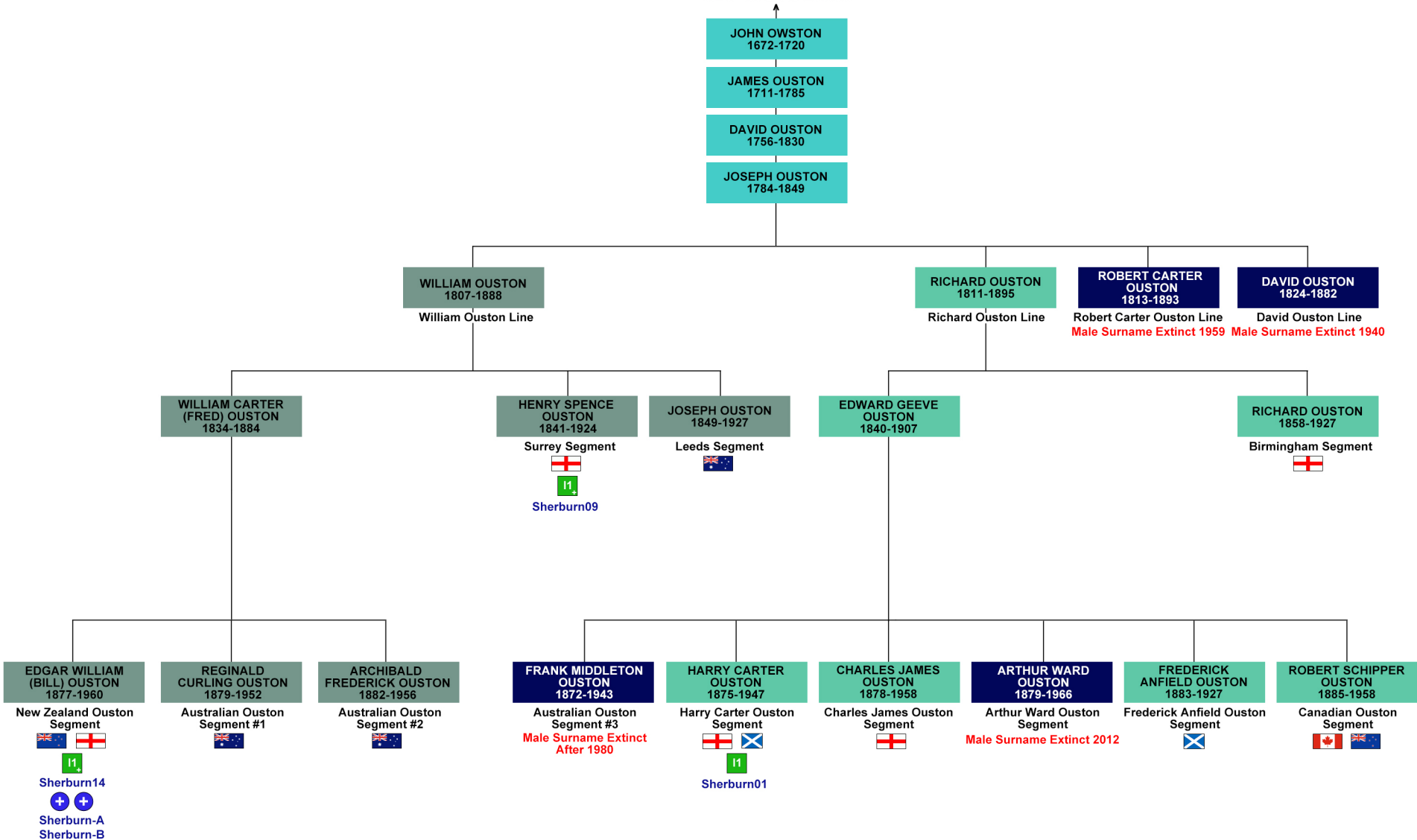
*Sherburn10's I1 markers do not match other Owston I1 markers; however, autosomal testing indicates matching with other members of this branch.

SHERBURN FAMILY PART THREE: THORPE BASSETT BRANCH

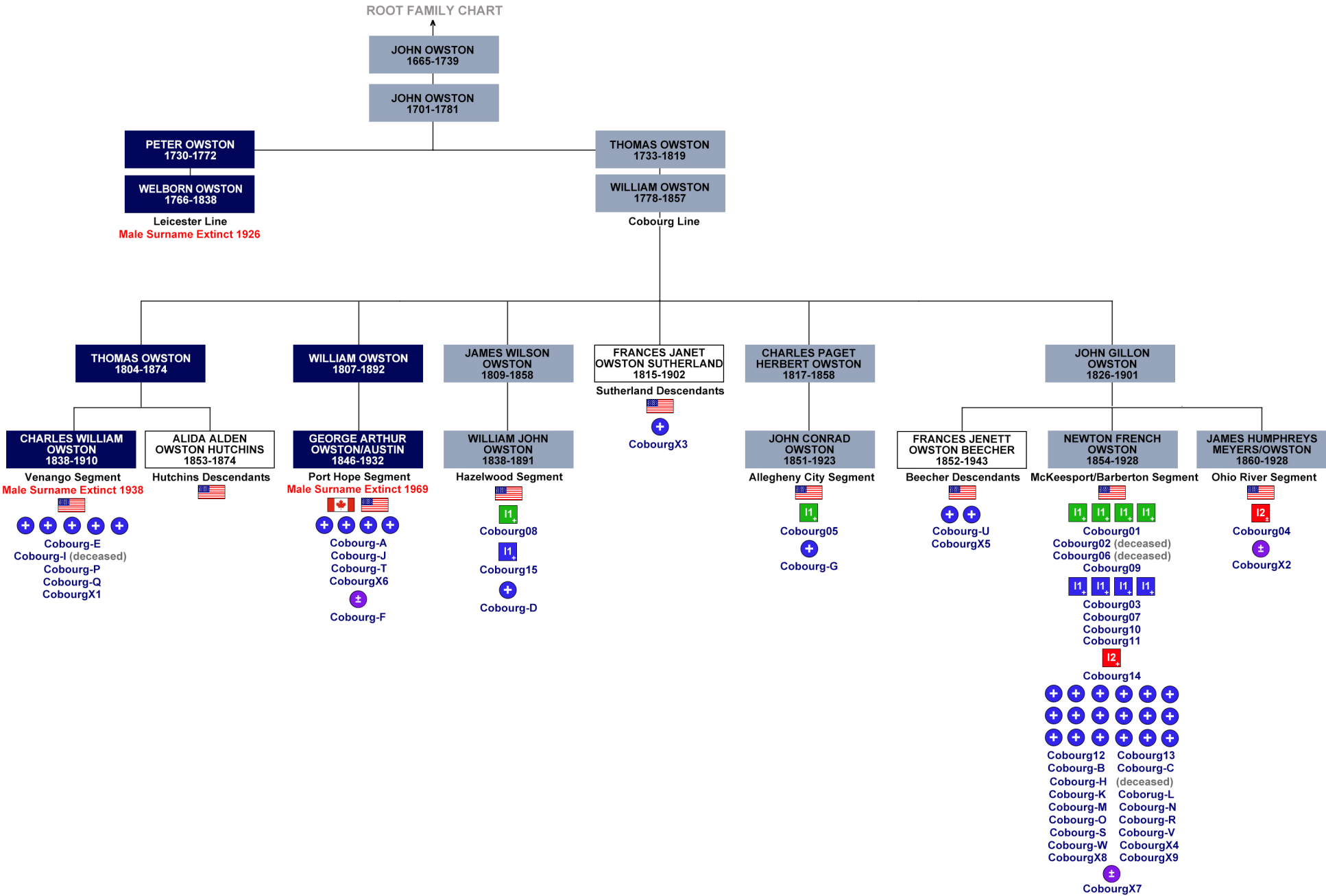


SHERBURN FAMILY PART FOUR: HOLDERNESS BRANCH

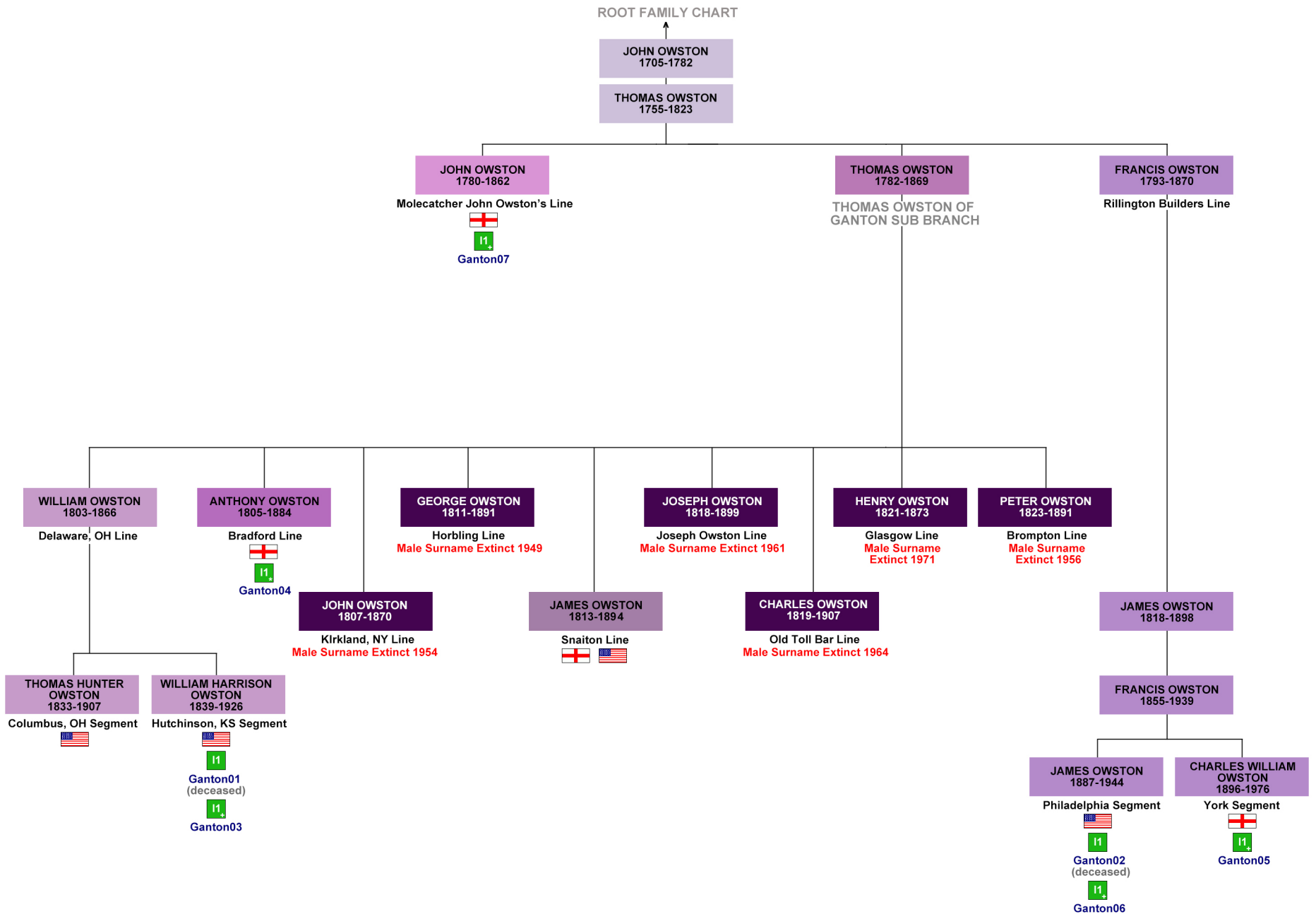
ROOT FAMILY CHART



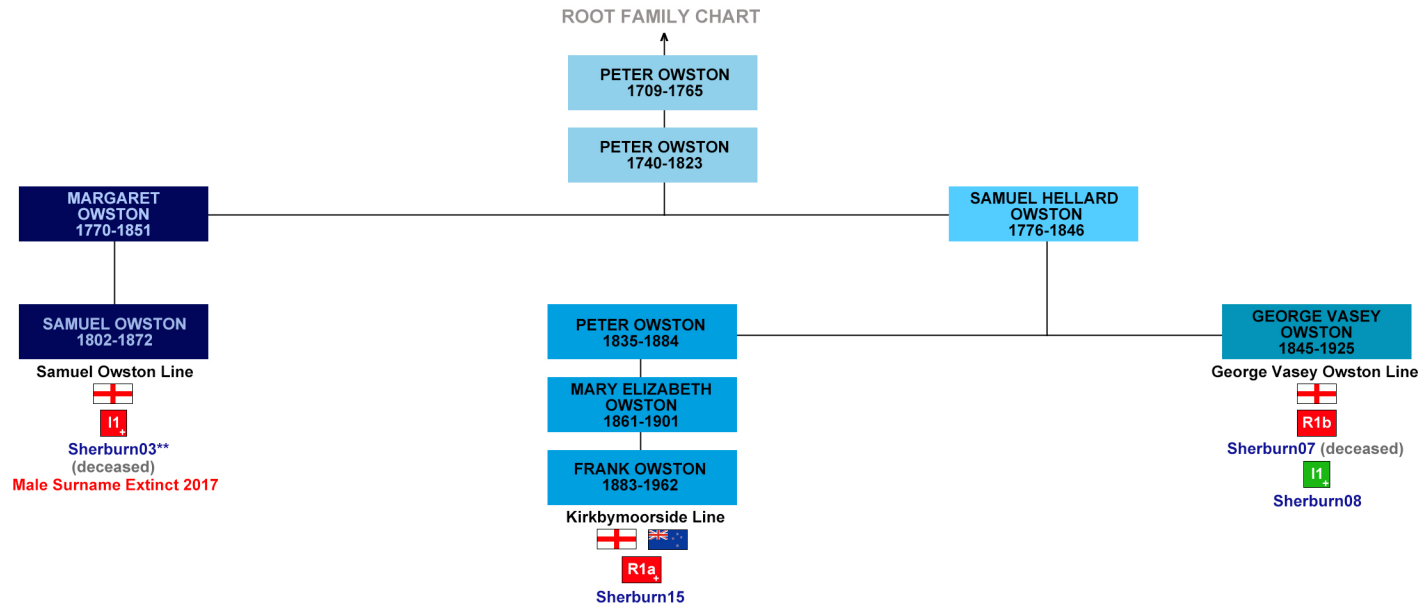
SHERBURN FAMILY PART FIVE: JOHN OWSTON BRANCH



SHERBURN FAMILY PART SIX: GANTON BRANCH

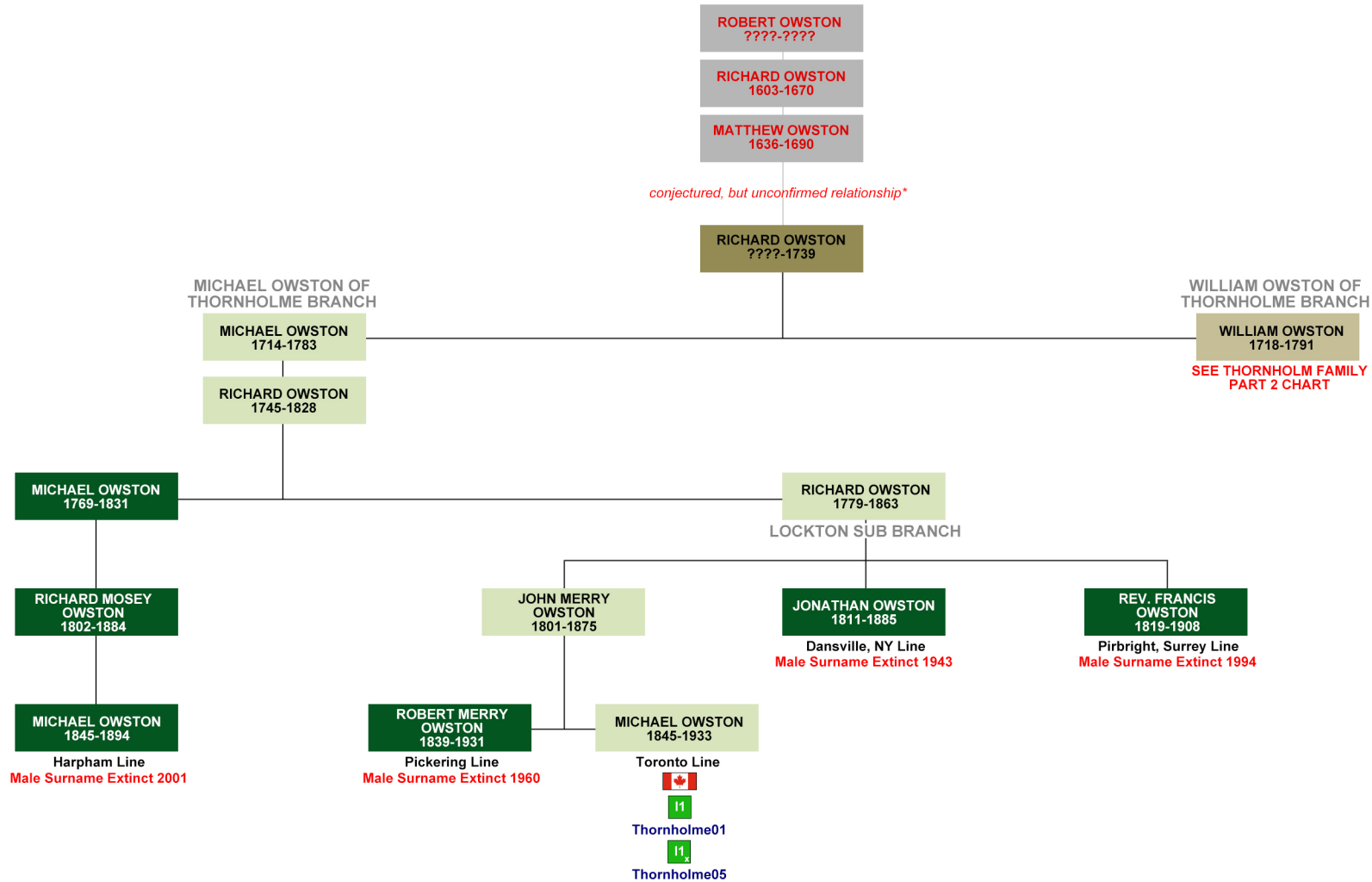


SHERBURN FAMILY PART SEVEN: YEOMAN FARMER BRANCH



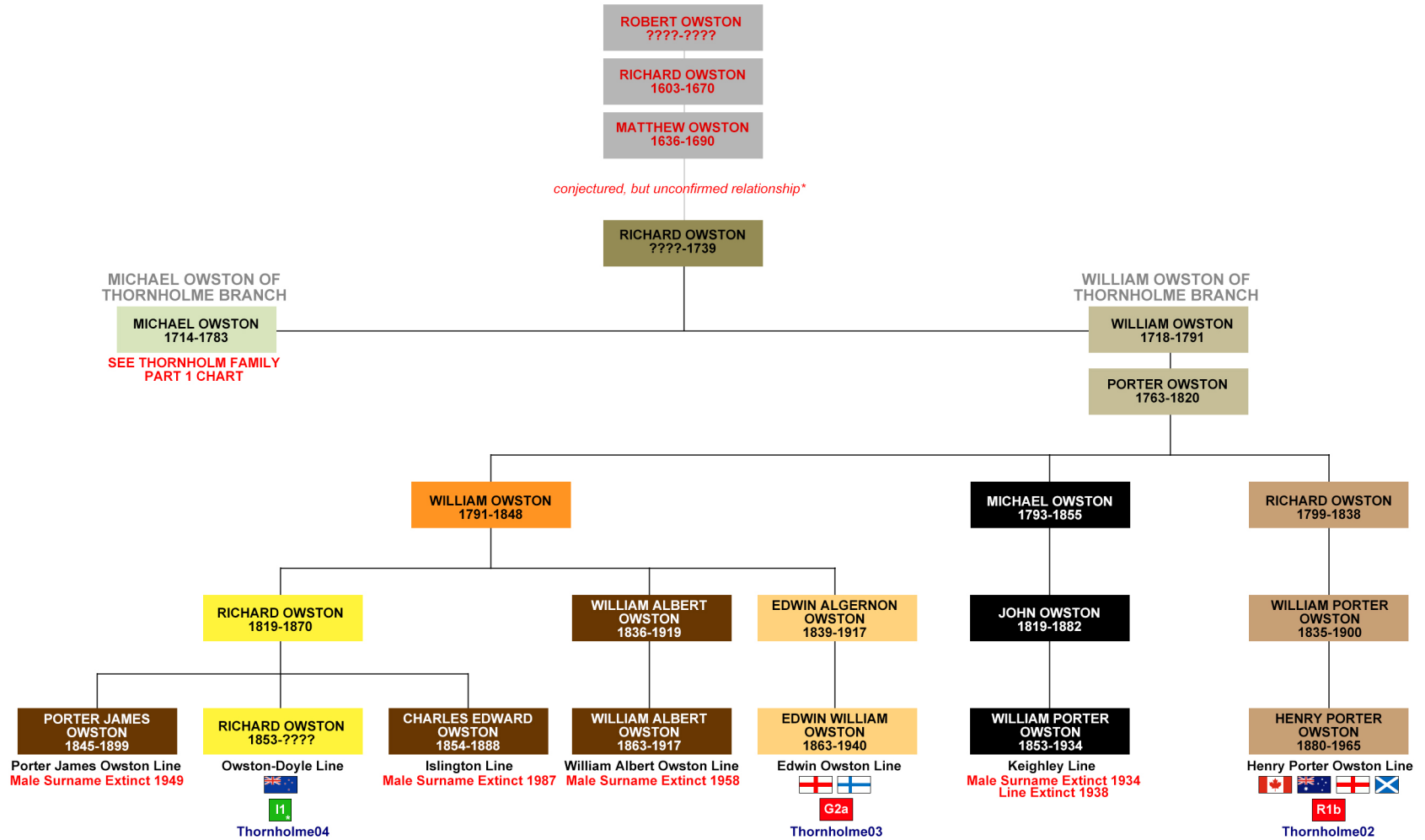
**Sherburn03's I1 markers do not match other Owston I1 markers; however autosomal matching DNA is found with other members of this branch.

THORNHOLME OWSTON FAMILY PART ONE: MICHAEL OWSTON BRANCH

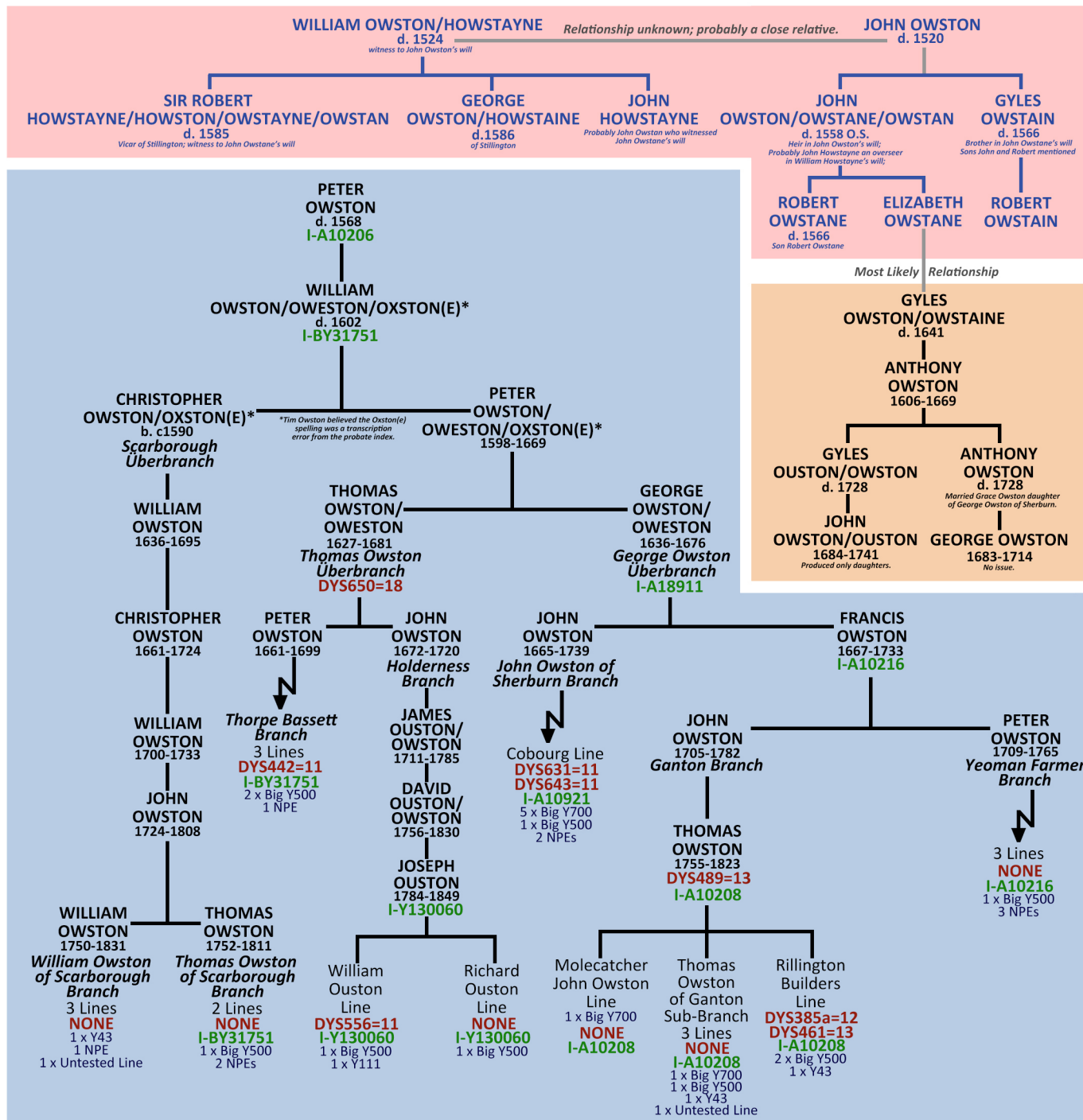


*The ancestry of Richard Owston (1779-1863) has not been proven; however, the usage of names Richard, Michael, Matthew, and Robert are found in both the Richard Owston family of Thornholme and the Robert Owston family of Ganton.

THORNHOLME OWSTON FAMILY PART TWO: WILLIAM OWSTON BRANCH



*The ancestry of Richard Owston (????-1739) has not been proven; however, the usage of names Richard, Michael, Matthew, and Robert are found in both the Richard Owston family of Thornholme and the Robert Owston family of Ganton.



OWSTON/OUSTON FAMILY TREE

Compiled through the combined research of the late Timothy J. Owston, MSc(TECH)IT; Roger J. Ouston, Wg Cdr RAF (Retd); and James M. Owston, EdD

Updated 13 June 2023

